

SPECIFICATIONS LTP TOUCH PANEL



LTP - S6M-F

- 5.7" diagonal mono STN LCD
- 16 shades of gray
- NEMA 4, 4X (indoor)
- 320x240 pixel resolution
- 140 nits brightness
- 25,000 hour expected bulb half-life
- 1/4" O-ring gasket and eight mounting studs for NEMA 4/4X (indoor)
- 2.3" (59.0mm) installed depth
- Has all LTouch Enhanced objects
- Has all 4,000 Library symbols
- Programmed with LTouch Programming software.



LTP - S6W-RS

- 5.7" diagonal LCD
- 4 shades of blue
- NEMA 1 *
- 320x240 pixel resolution
- 140 nits brightness
- 25,000 hour expected bulb half-life
- 48 touch cells (8x6)
- 1/4" gasket and four DIN mounting clips for NEMA 1
- 2.3" (59.0mm) installed depth
- 256K RAM, not expandable
- Has all LTouch Enhanced objects
- Has all 4,000 Library symbols
- Programmed with LTouch Programming software.



LTP - S6C-F

- 5.7" diagonal color STN LCD
- 128 colors
- NEMA 4, 4X (indoor)
- 320x240 pixel resolution
- 512K RAM expandable to 1.5MB
- 512K, 1MB or 2MB option flash card for memory backup
- Ethernet card optional (LTP-ETHERNET)
- Modbus TCP/IP card optional (LTPETHERPLUS)
- 180 nits brightness
- 25,000 hour expected bulb half-life
- 48 touch cells (8x6)
- 1/4" O-ring gasket and eight mounting studs for NEMA 4/4X (indoor)
- 2.3" (59.0mm) installed depth
- Has all LTouch Enhanced objects.



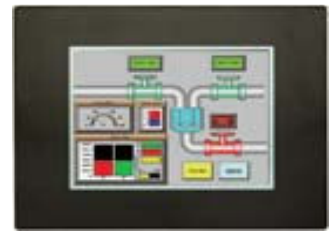
LTP - S8C-F

- 8.2" diagonal color STN LCD
- Low-profile slim bezel design
- 128 colors
- 640x480 pixel resolution
- 512K RAM expandable to 1.5MB
- 512K, 1MB or 2MB option flash card for memory backup
- Ethernet card optional (LTP-ETHERNET)
- MODBUS TCP/IP card optional (LTP-ETHERPLUS)
- 140 nits brightness
- 25,000 hour expected bulb half-life
- 192 touch cells (16x12)
- 1/4" gasket and four DIN mounting clips for NEMA 1
- 1/4" O-ring gasket and eight mounting studs for NEMA 4.



LTP - T15C-FS

- 15.0" diagonal color TFT LCD
- Low-profile slim bezel design
- 128 colors
- NEMA 1, FDA compliant *
- 640x480 pixel resolution
- 1MB RAM expandable to 1.5MB or 2MB
- 1MB or 2MB option flash card for memory backup
- Ethernet card optional (LTP-ETHERNET)
- MODBUS TCP/IP card optional (EZP-ETHERPLUS)
- 250 nits brightness
- 40,000 hour expected bulb half-life
- 192 touch cells (16x12)
- 1/4" gasket and four DIN mounting clips for NEMA 1
- 4.29" (108.9mm) installed depth
- Has all LTouch Enhanced objects
- Has all 4,000 Library symbols
- Programmed with LTouch Programming software.



LTP - T10C-E

- Low-profile slim bezel design
- 128 colors
- NEMA 1, FDA compliant *
- 640x480 pixel resolution
- 1MB RAM expandable to 1.5MB or 2MB
- 1MB or 2MB option flash card for memory backup
- Ethernet card optional (LTP-ETHERNET)
- MODBUS TCP/IP card optional (LTP-ETHERPLUS)
- 250 nits brightness
- 40,000 hour expected bulb half-life
- 192 touch cells (16x12)
- 1/4" gasket and four DIN mounting clips for NEMA 1 Programming software
- 10.4" diagonal color TFT.